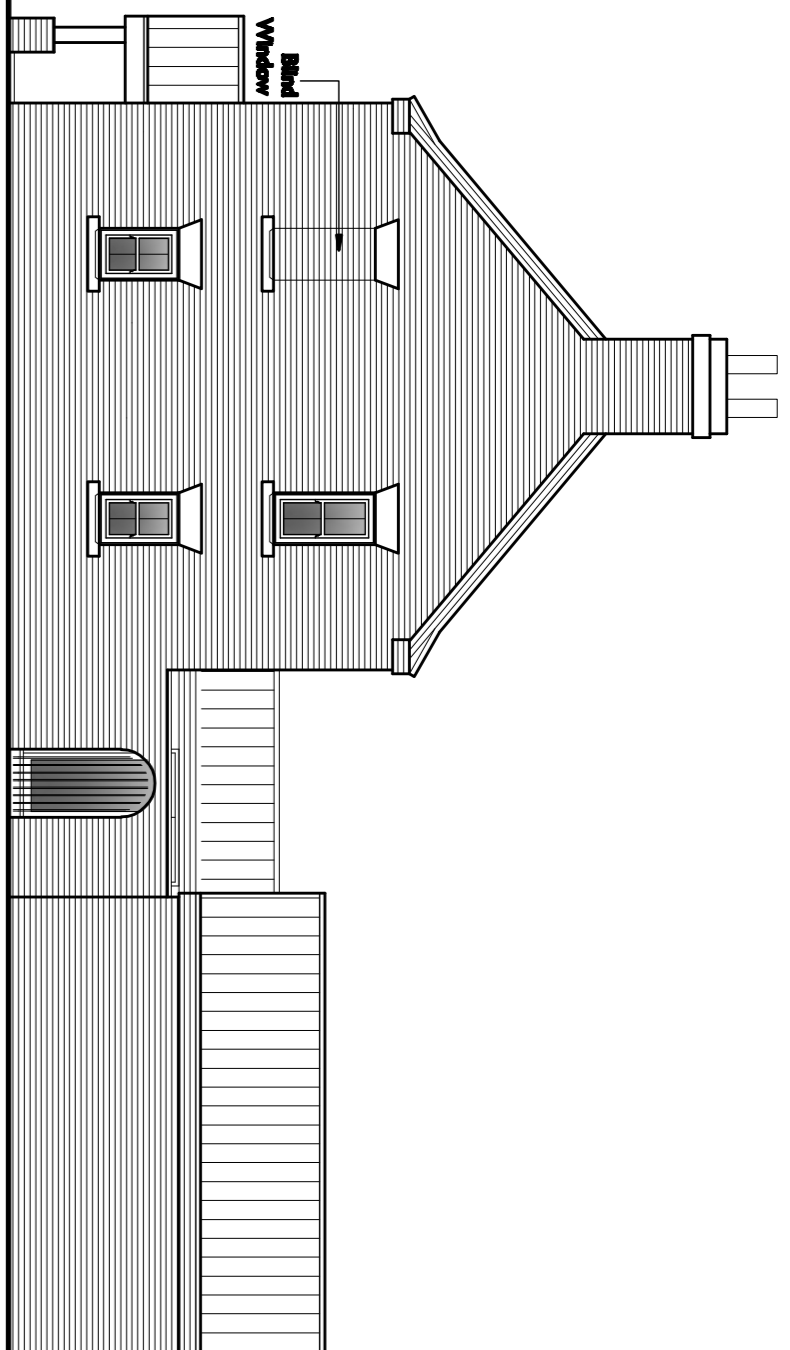
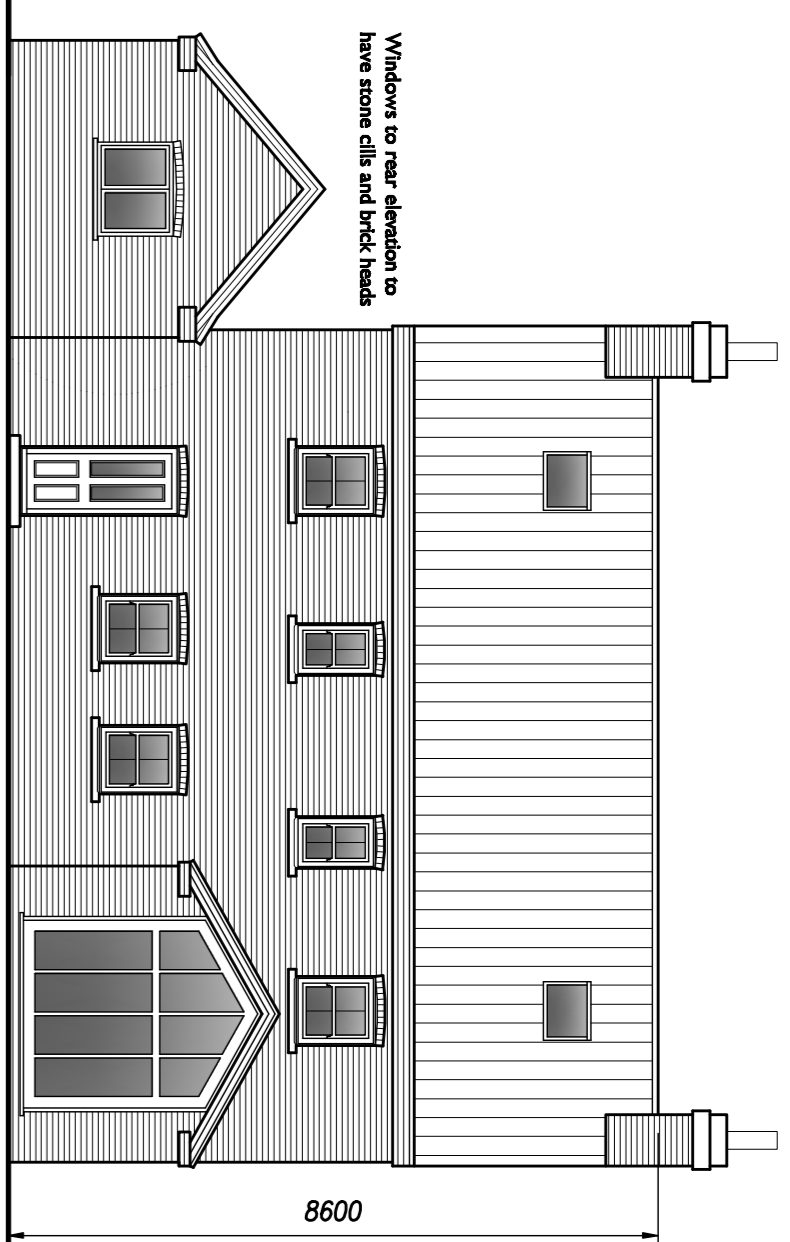


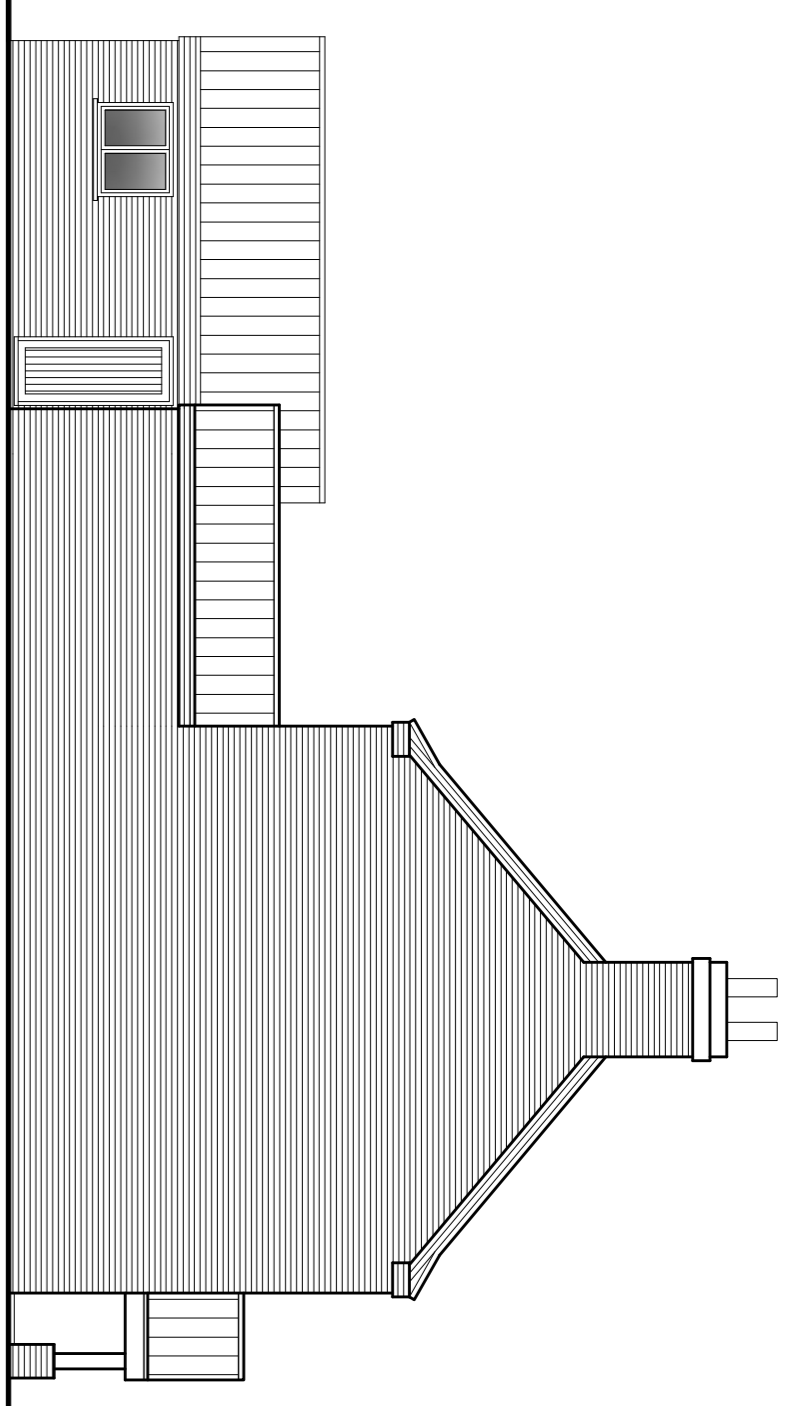
Front Elevation - 1:100



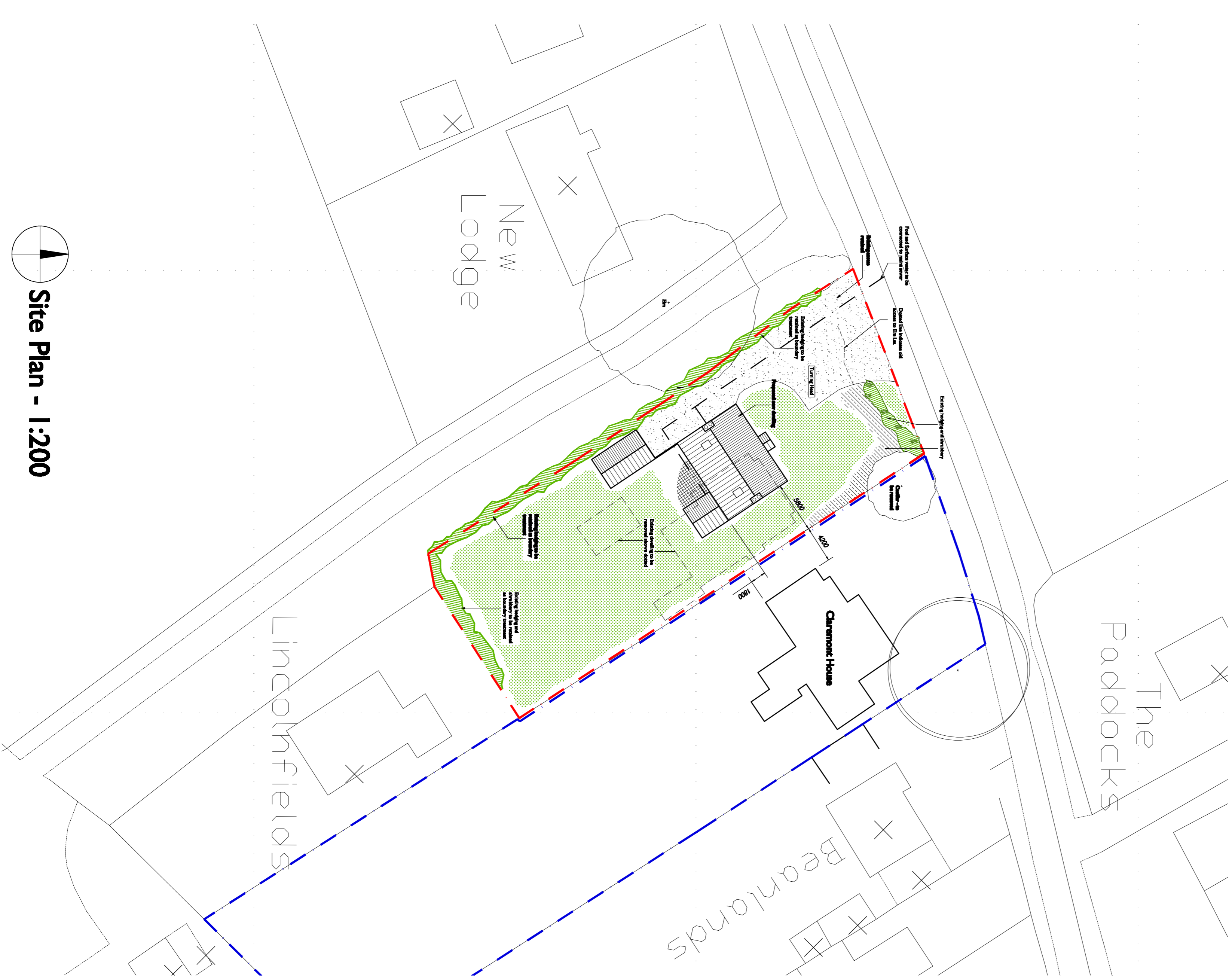
Side Elevation - 1:100



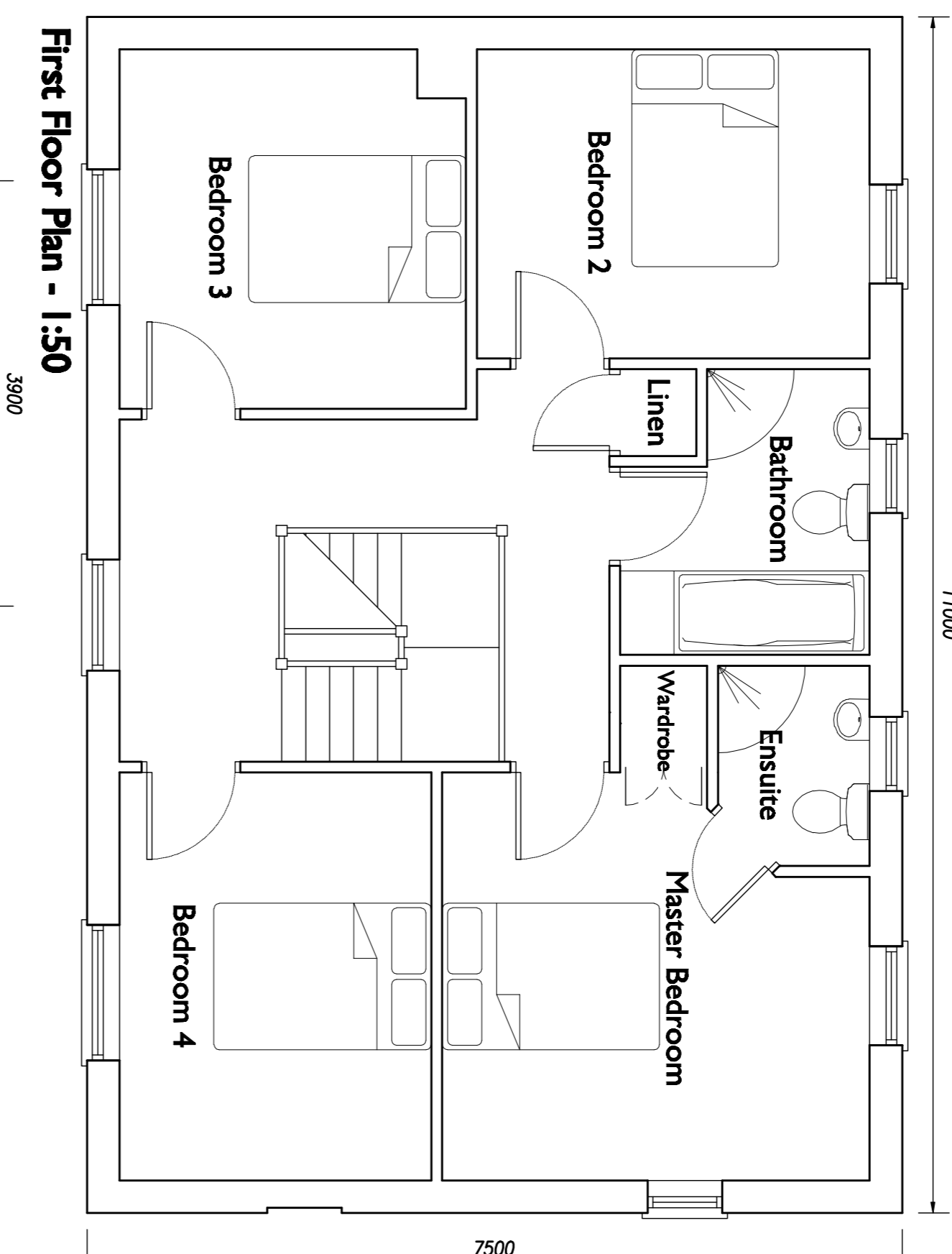
Rear Elevation - 1:100



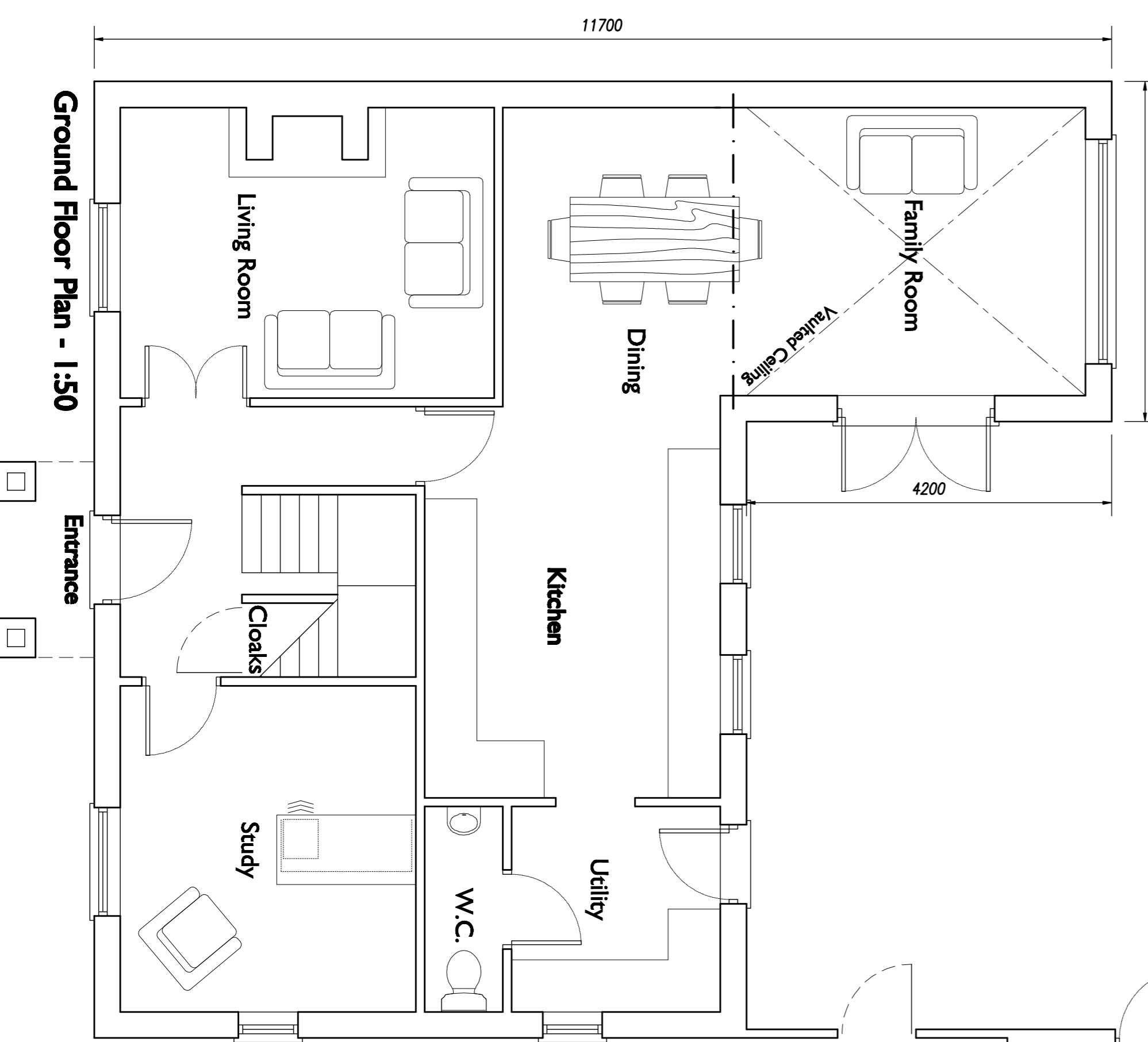
Side Elevation - 1:100



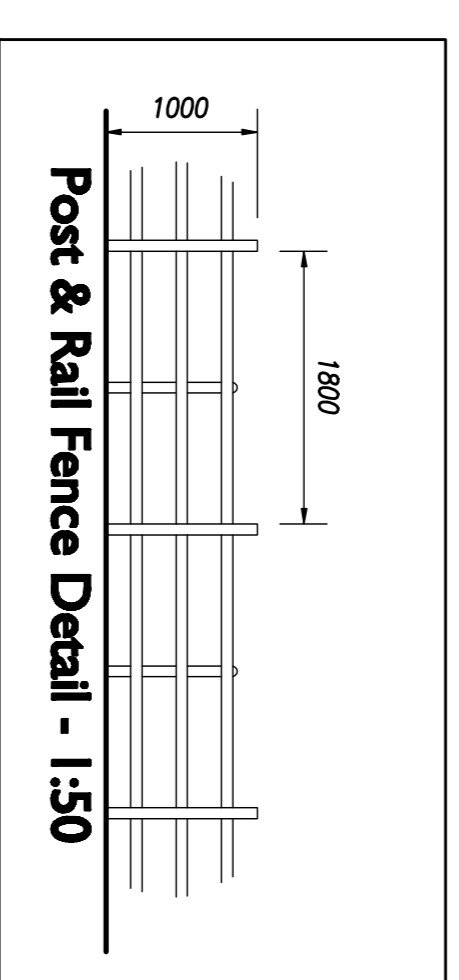
Site Plan - 1:200



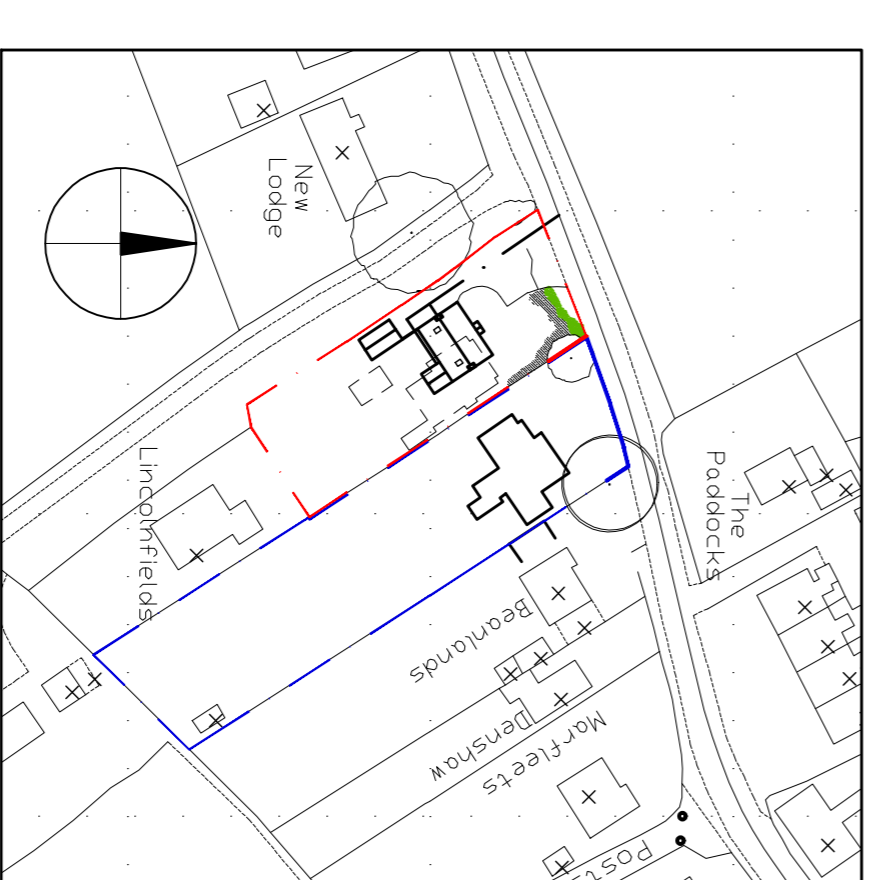
First Floor Plan - 1:50



Ground Floor Plan - 1:50



Post & Rail Fence Detail - 1:50



Location Plan - 1:250

NOTES

The drawing is the copyright of FLARE VISUAL LTD and must not be reproduced without written consent. All dimensions to be verified on the plot on commencement of works. Any measurements are to be taken from the finished ground level unless otherwise stated. All dimensions are in millimeters unless otherwise stated.

Rev A - July 2008 - Client Amendments - Change Size, Tinting Head, Access
 Rev B - July 2008 - Client Amendments - Change Access
 Rev C - July 2008 - Planning Amendments - Change Drain
 Rev D - July 2008 - Planning Amendments - Change Access
 Rev E - July 2008 - Planning Amendments - Change Access
 Rev F - Sept 2008 - Planning Amendments - Site boundaries

Prepared by: **flarevisual**
 North Thornesley for Mr & Mrs Barnaby
 Proposed Drawings
 Project No: **FI885 - 01 - F**
 Date: 15th July 2008

flarevisual **fl**
 architecture
 015077 00404 | mail@flarevisual.co.uk | www.flarevisual.co.uk
 Flare Visual Ltd
 Lord VV Centre
 North Holme Road
 Louth, Lincs

PAPER SIZE: A1